



INSTRUCTION MANUAL

OPTICAL INTERFACE UNIT

07-00022A

NOISE LABORATORY CO., LTD.

Edition 1.07

AEK00013-00E-0

Contents

1. IMPORTANT SAFETY PRECAUTIONS	1
2. PREFACE	1
3. BASIC SAFETY PRECAUTIONS	2
4. ENCLOSED ITEMS	2
5. INSTALLING DRIVER	2
6. CONFIRMATION OF INSTALLATION	4
7. HOW TO CONNECT	5
8. SPECIFICATIONS	5
9. WARRANTY	6
10. MAINTENANCE	7
11. SUPPORT NETWORK	7
12. APPLICATION FORM	7

NOTICE

- The contents of this instruction manual (the “Manual”) are subject to change without prior notice.
- No part of the Manual may be reproduced or distributed, in any form or by any means, without the authorization of the Company.
- The contents of the Manual have been thoroughly examined. However, if you find any problems, misprints, or missing information, please feel free to contact our sales agent who you purchased our product from.
- The Company assumes no responsibility for any loss or damage resulting from improper usage, failure to follow the Manual, or any repair or modifications of this product undertaken by a third party other than the Company or the agent authorized by the Company.
- Reverse engineering, reverse compiling or disassembling of this product is prohibited.
- Note that the Company cannot be held responsible for any consequences arising from the use of this product.
- Product names and business names referred to in the Manual are generally trademarks or registered trademarks of third parties. Those trademarks have nothing to do with the Company. ® and TM are not always referred to in this manual.

1. IMPORTANT SAFETY PRECAUTIONS

The following is very important matters in order to safely handle the optical interface unit MODEL: 07-00022A (hereafter “the Unit”). Read carefully and strictly observe them.

1. The Unit is manufactured only for controlling Noise Laboratory’s test equipment. Note that using for other purposes are not available.
2. Since the equipment controlled with the Unit may radiate high level of electromagnetic wave and generate high voltage, any person who has an implanted pace maker should not enter the test area while the Unit is operating. Fully be careful of an electric shock in setup and operation.

2. PREFACE

We thank you very much for your purchasing the optical interface unit MODEL: 07-00022A (the Unit). In order to obtain the highest performance of the Unit, it is recommended that the contents of this instruction manual (“the Manual”) be thoroughly understood and used as ready reference for operation and maintenance.

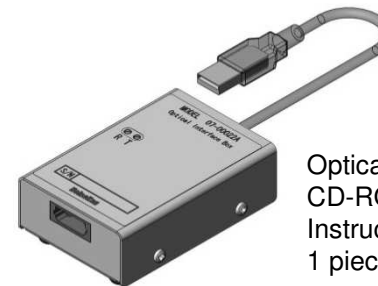
1. The Unit is used for controlling remotely the Noise Laboratory’s products which are available for optical communication.
2. The Unit is available for Windows 10/11, but its operation with the other OSs cannot be assured.
3. Keep the Manual where it is readily available.

3. BASIC SAFETY PRECAUTIONS

1. Mishandling or careless operation of equipment controlled with the Unit may result in a fatal wound. 【Precautions for human body, operation, environments and connection】
2. Our company and sales agents shall have no responsibility for any accident resulting in injury or death, any breakage or resultant damages due to irresponsible handling. 【Precautions for human body, operation, environments and connection】
3. Avoid stressing or bending the attached optical cable. Put on a cap and a cover while the Unit is not used.

4. ENCLOSED ITEMS

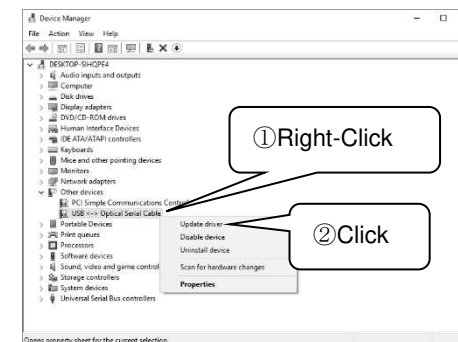
Optical Interface Unit 07-00022A Main Unit 1 piece



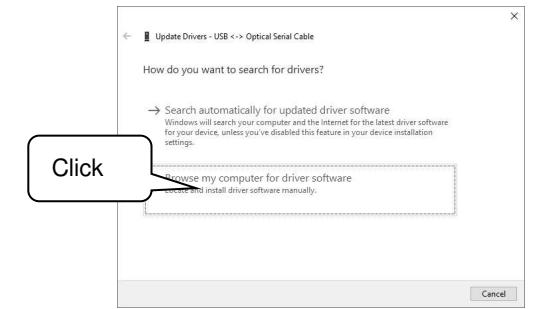
Optical cable (5 m): 1 piece
CD-ROM: 1 piece
Instruction Manual (this sheet): 1 piece

5. INSTALLING DRIVER

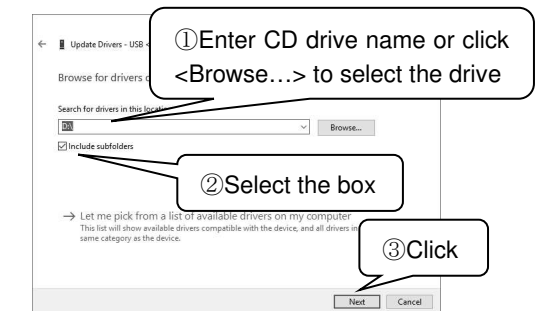
- ① Log on Windows 10/11 with administrator’s ID.
- ② Insert the attached CD into CD drive of PC and connect the Unit to the USB port.
- ③ Open Device Manager.
Right-click the [Start] button and click [Device Manager].
- ④ If [Other devices] shows [USB <-> Optical Serial Cable] marked with “!”, right-click [USB <-> Optical Serial Cable] and click [Update driver] with the mouse.



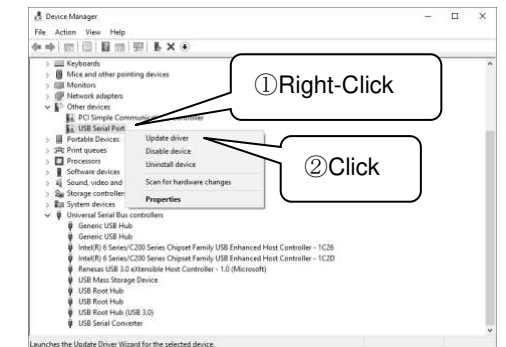
- ⑤ When the [Update Drivers – USB <-> Optical Serial Cable] screen appears, click [Browse my computer for driver software].



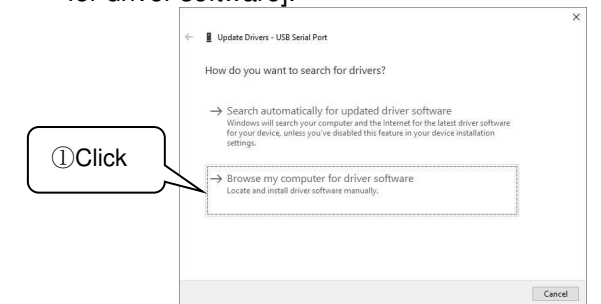
- ⑥ Specify the name of the drive into which you inserted the driver CD, and select the checkbox for [Include subfolders].



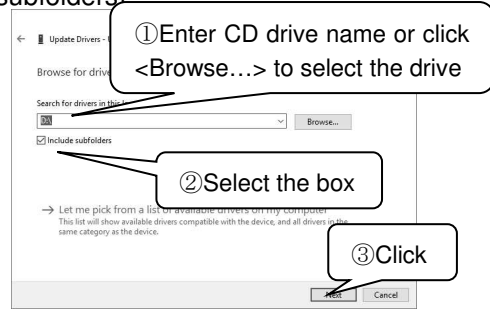
- ⑦ [Windows has successfully updated your drivers] appears on the screen. Then, click [Close].
- ⑧ Install the driver software for the USB Serial Port. If [Other devices] shows [USB Serial Port] marked with “!”, right-click [USB Serial Port] and click [Update driver] with the mouse.



- ⑨ When the [Update Driver Software - USB Serial Port] screen appears, click [Browse my computer for driver software].



- ⑩ Specify the name of the drive into which you inserted the driver CD, and select the checkbox for [Include subfolders]



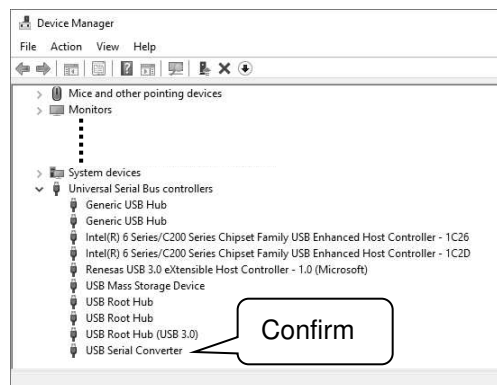
- ⑪ [Windows has successfully updated your drivers] appears on the screen. Then, click [Close].

Notice: For installing driver, logging on with administrator's ID is necessary.

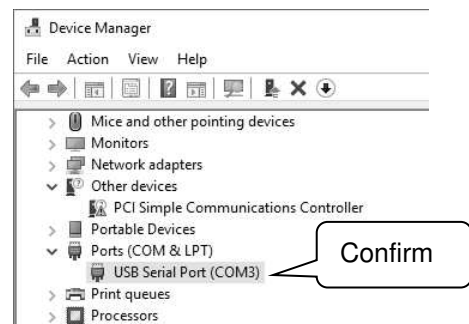
Driver is necessary for each USB port to be used. As the port number can be different in each case, be careful about conditions of USB port in changing it.

6. CONFIRMATION OF INSTALLATION

- ① Open Device Manager. (Refer to [5.INSTALLING DRIVER] ③Open Device Manager.)
- ② Expand [Universal Serial Bus controllers] and check to make sure that [USB Serial Converter] is not marked with "!" or "x".



- ③ Expand [Ports] and check to make sure that [USB Serial Port] is not marked with "!" or "x".



"COM3" indicated behind USB Serial Port in the above figure is the port number recognized with application.

Notice: The indication on screen and the port number is dependent on the PC environment.

7. HOW TO CONNECT

- Connect USB connector of the Unit to PC. If the driver is installed normally, the Unit can be used as is. Even if the driver is installed, the driver should be reinstalled in case of using a USB port which is newly utilized for this purpose.
- Take off the cover of the optical connector of the Unit and the cap of the optical cable. Connect the optical cable to the Unit and connect the other end of the cable to equipment.
- Start the application software controlling equipment and set up COM port if it is necessary. Check COM port number in confirmation of installing. (For details, refer to the instruction manual of the application software.)
- In taking off the Unit from USB connector, be sure to finish the control application and OS and take it off in power off status.

Notice:

If the Unit is taken off from USB connector in operation, PC's workings will become unstable.

In case of connecting the Unit to USB hub, use self-power type USB hub.

The Unit cannot deal with standby, pause, and sleep status.

With a USB hub, PC workings may become unstable. In such a case, change the USB hub or connect the Unit to PC directly.

8. SPECIFICATIONS

I/F Standard	Conforming to USB Specification Rev 2.0
Connector Spec	USB (A type Plug)⇔Optical connector(JIS F07)
Operating Voltage	DC 5 V (Supplied by bus power)
Usable Environment	Temperature 15~35°C Humidity 25~75% (Without dewing)
Dimensions	(W)56 x (H)27 x (D)96 mm (Without projection)
Weight	Approximately 110 g
OS	Windows 10/11

9. WARRANTY

Servicing terms

The following terms are applicable to servicing by Noise Laboratory Co., Ltd., (hereafter referred to as the Company) provided to maintain the intended performance of its products.

- Scope**
The following terms shall apply only to products made by the Company.
- Technical servicing fee**
In the event of a failure of a product within the warranty period (see warranty section), the Company will repair a product without charge. After the warranty expires, repairs will be billed at a nominal cost.
- Ownership of defective parts**
Any defective part exchanged under the Company's servicing belongs to it.
- Limited liability**
In the event that damages resulting from servicing by the Company are intentional or caused by negligence, the Company will pay the cost but at the purchase value of the relevant product maximum. But, notwithstanding the foregoing, the Company shall not be responsible for any incidental or consequential damages of any nature, including without limitation thereof loss of would-be profit or compensation demanded from a third party
- Refusal to offer servicing**
The company may not accept a repair order in the following cases:
 - More than 5 years have passed since the product discontinued
 - More than 8 years have passed after delivery
 - Required component for servicing already discontinued and no alternative is available.
 - Product changed, repaired or remodeled without obtaining a prior permission from the Company.
 - Product severely damaged to the extent it has lost its original form

Limited warranty

The company warrants its products to be free from defects in materials and workmanship under normal use and service for a period of one year from date of delivery. In the event of failure of a product covered by this warranty, the Company will repair the product or may, at its option, replace it in lieu of repair without charge.

Notwithstanding the foregoing, the Company shall not be responsible for any incidental or consequential damages of any nature, including without limitation thereof loss of would-be profit or compensation demanded from a third party. This warranty is valid only in Japan.

- Scope**
This warranty shall only apply to products made by the Company.
- Period**
One year from date of delivery. The warranty may be valid in 6 months after servicing if the same failure on the same component has repeated.
- Exclusions**
The followings are exclusions from this warranty:
 - Consumable parts (including HV relay)
 - Failure caused by misuse, neglect, accident or abnormal conditions of operation
 - Failure caused by remodeling on the user side without prior permission from the Company
 - Failure caused by servicing by unauthorized personnel by the Company

- Failure due to force majeure including but not limited to, acts of God, fire, war, riot, rebellion and others
- Failure due to shock or drop in or after transit
- Failure due to operation in environment being out of ambient specifications.
- A unit shipped to overseas

10. MAINTENANCE

- When repair, maintenance or internal adjustment of the unit is required, a qualified service engineer takes charge of such work.
- Maintenance on the user side is restricted to the outside cleaning and functional check of the unit.
- For removing stains on outside, wipe them lightly with cloth soaked with water or neutral detergent.
- Do not open the cover of the unit.

11. SUPPORT NETWORK

- If a symptom which seems a trouble is found, inform the model name and serial number of the product together with the symptom to Noise Laboratory or your nearest sales agent of Noise Laboratory.
- When the product is returned to Noise Laboratory, write the state of the trouble, contents of your request, model name and serial number in a repair order, and pack the product and repair order sheet in the former package of equivalent suitable for transit and send them back.

For repair and other services, contact:
International Dept. Noise Laboratory Co., Ltd.
1-4-4 Chiyoda, Chuo-ku<Sagamihara, Kanagawa 252-0237, Japan
Tel: +81 (0)42-712-2051 Fax: +81 (0)42-712-2050

----- Cut here -----

12. APPLICATION FORM

We apply for buying INSTRUCTION MANUAL.

Model: 07-00022A

Serial Number :

Applicant's address:

Company name:

Section:

Name of person in charge:

TEL:

FAX:

Cut off this page "APPLICATION FORM FOR BUYING INSTRUCTION MANUAL" from this booklet and keep it for future use with care.

When an INSTRUCTION MANUAL is required, fill out the above Application Form and mail or fax it to NOISE LABORATORY CO., LTD. or our sales agent.