

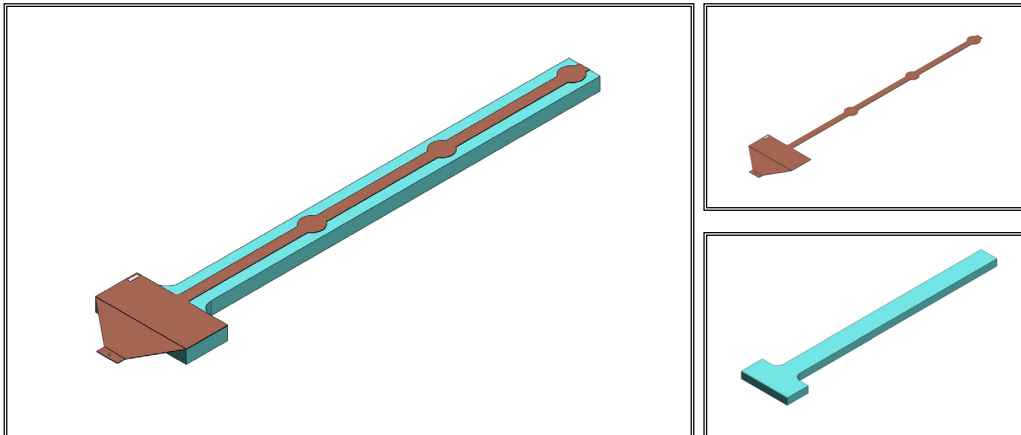
MODEL 03-00065A : ISO 10605 Annex F Coupling plane
Instruction Upon Usage

Thank you for your purchasing ISO10605 Annex F Coupling plane MODEL: 03-00065A.

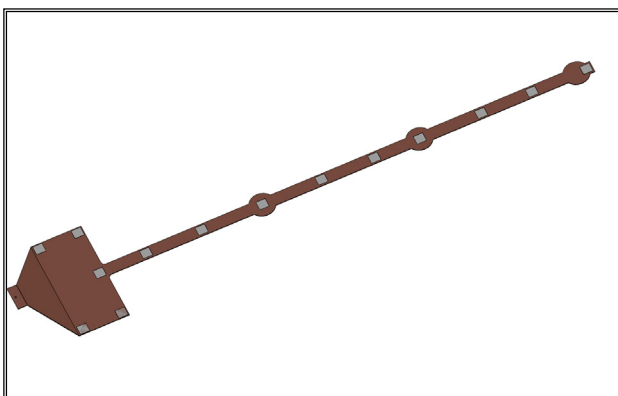
This leaflet provides brief explanation for usage of this product. Please read this leaflet before using this product.

This product consists of two parts as shown in figures as below.

For using this product for testing, the two parts are used with the copper part on top the other as shown in figures as below.

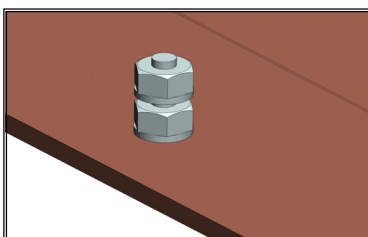


Double-sided tapes are stuck on the bottom side of the copper part as shown in a figure as below. They are for fixing the copper part when it is laid on the other part to use. In case that fixing it is necessary, use the double-sided tapes with peeling a cover-paper off from the tape.

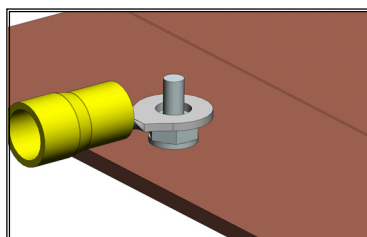


A screw for wiring is installed on the tip of the copper part. The product can be used without this screw considering with test environment and test purpose on site.

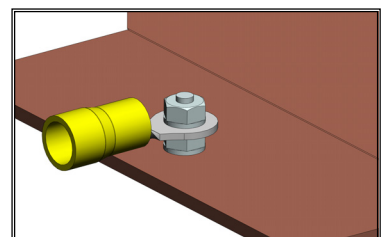
Figures as below show an example of usage.



Undo the upper nut and washer.



Put the soldering terminal of wiring on the lower nut.



Fix the terminal with the nut and washer.